

CURBSIDE COLLECTION

GARBAGE ONLY

Only standard size garbage bags measuring 30"x36" (76 cm x 91 cm), 30 gallon (114 litres) garbage cans or bundles no longer than 30" will be collected as long as they weigh no more than 45 lbs (20 kg).

ACCEPTABLE

- disposable diapers
- ceramics, dishes, window glass
- light bulbs, ovenware, crystal
- plastic lids, toys and tools
- foam containers and trays
- metal pots and pans
- waxed or coated boxes
- milk containers and juice boxes
- microwable trays and containers
- gardening trays and planters
- meat, fish, grease, bones
- dairy products
- other regular household waste

NOT ACCEPTABLE

- Large items (such as mattresses, chairs, refrigerators, freezers)
- Hazardous waste
- Biomedical waste
- Radioactive waste
- Construction and demolition waste
- Explosive waste (ammunition)
- Any liquid waste



BESIDE YOUR BLUE BOX



NEWSPAPERS AND INSERTS, MAGAZINES & PHONE BOOKS

- Please bag together

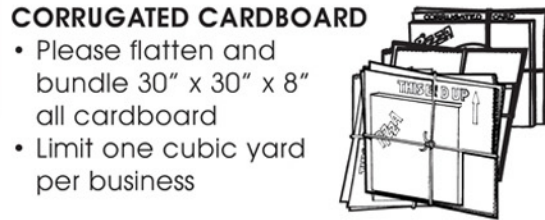
PLASTIC BAGS

- Please remove cash register tapes
- Stuff into one bag



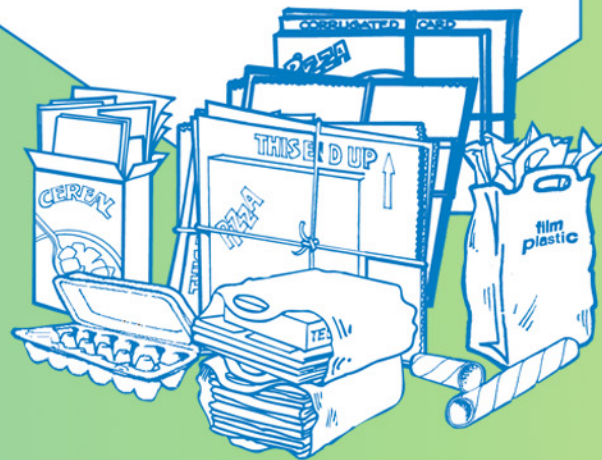
BOXBOARD & FINE PAPER

- Please remove all wrap, spouts & liners
- Flatten and place inside another box
- Place fine paper in same box



CORRUGATED CARDBOARD

- Please flatten and bundle 30" x 30" x 8" all cardboard
- Limit one cubic yard per business



INSIDE YOUR BLUE BOX



GLASS BOTTLES & JARS

- Please rinse
- Place metal lids in blue box

ALUMINUM & STEEL BEVERAGE & FOOD CONTAINERS

- Please rinse
- Place lids inside cans & pinch to trap the lid inside



RIGID SCREW TOP PLASTIC

- Clean screw top plastic containers with symbols



marked on the bottom

- Please remove caps



WIDE MOUTH TUBS

- Clean plastic tubs with symbols



ALUMINUM FOIL & FOIL WRAP

- Please rinse

AEROSOL & PAINT CANS

- Ensure that cans are EMPTY & lids removed
- Place metal lids loose in the blue box



Top Four Reminders!

1 To ensure your materials are collected, place your items out on the proper side of the road by 7am on your designated collection day.

We realize that you can get into a routine regarding your collection time. However we can't guarantee that we will arrive at the same time each day. Something as simple as a driver calling in sick can alter the schedule of other drivers which could affect your collection schedule.

2 Don't let the wind blow away your recyclables! Place your containers in your blue box. Put all your newspapers and mixed paper in a plastic grocery bag and place the bag with your papers on top of your containers in your blue box.

You can also place a piece of plywood on top of the blue box



3 Please do not hide your blue box and garbage. Be sure not to place it behind an obstruction where it cannot be clearly seen from the road.

For example: behind a snow drift, hidden in tall grass, behind a hedge, below the level road in a ditch.

If you have been instructed to place your material on the mailbox side of the road, be sure that it won't interfere with having your mail delivered!

4 It is extremely important to properly prepare your cardboard, especially if you have a large amount to recycle.

Recycling Only Communities: Cardboard has to be flattened and bundled and no larger than 30"x30"x8".

Co-Collection Communities: Cardboard does not have to be flattened if it is less than 30"x30"x30".